

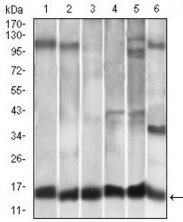
## CCL2 Ab

Cat.#: BF0556  
Size: 50ul,100ul,200ul

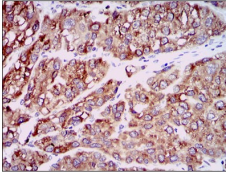
Concn.: 1mg/ml  
Source: Mouse

Mol.Wt.: 11kDa  
Clonality: Monoclonal

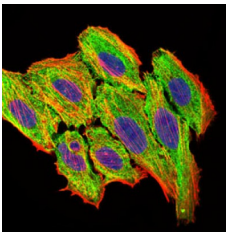
Application:	ELISA 1/10000, WB 1/500 - 1/2000, IHC 1/200 - 1/1000, ICC 1/200 - 1/1000, FCM 1/200 - 1/400
Reactivity:	Human,Mouse,Monkey
Purification:	Affinity-chromatography.
Specificity:	CCL2 Ab detects endogenous levels of total CCL2.
Immunogen:	Purified recombinant fragment of human CCL2 expressed in E. Coli.
Uniprot:	P13500
Description:	This gene is one of several cytokine genes clustered on the q-arm of chromosome 17. Cytokines are a family of secreted proteins involved in immunoregulatory and inflammatory processes. The protein encoded by this gene is structurally related to the CXC subfamily of cytokines. Members of this subfamily are characterized by two cysteines separated by a single amino acid. This cytokine displays chemotactic activity for monocytes and basophils but not for neutrophils or eosinophils. It has been implicated in the pathogenesis of diseases characterized by monocytic infiltrates, like psoriasis, rheumatoid arthritis and atherosclerosis. It binds to chemokine receptors CCR2 and CCR4.
Subcellular Location:	Secreted.
Tissue Specificity:	Expressed in the seminal plasma, endometrial fluid and follicular fluid (at protein level).
Similarity:	Belongs to the intercrine beta (chemokine CC) family.
Storage Condition and Buffer:	Mouse IgG1 in phosphate buffered saline (without Mg <sup>2+</sup> and Ca <sup>2+</sup> ), pH 7.4, 150mM NaCl, 0.02% sodium azide and 50% glycerol.Store at -20 °C.Stable for 12 months from date of receipt.



Western blot analysis using CCL2 mouse mAb against A549 (1), HeLa (2), Raw264.7 (3), L1210 (4), C6 (5), and COS-7 (6) cell lysate.



Immunohistochemical analysis of paraffin-embedded liver cancer tissues using CCL2 mouse mAb with DAB staining.



Immunofluorescence analysis of HepG2 cells using CCL2 mouse mAb (green). Blue: DRAQ5 fluorescent DNA dye. Red: Actin filaments have been labeled with Alexa Fluor-555 phalloidin.

**IMPORTANT:** For western blot, incubate membrane with diluted primary Ab in 5% w/v milk, 1X TBS, 0.1% Tween@20 at 4°C with gentle shaking, overnight.

For Research Use Only. Not for use in diagnostic and therapeutic procedures. Not for resale without express authorization.